



PRINCESA GARDEN ISLAND
RESORT AND SPA

A Collection of Nature Awaits You

(+63) 917 873 9574 | (+63) 918 967 5132

www.princesagardenisland.com

CITY TOUR

The Puerto Princesa City Tour is a wonderful way to explore the vibrant capital city of Palawan, Philippines. Known as the "City in a Forest," Puerto Princesa offers a unique blend of natural beauty, cultural heritage, and modern attractions.



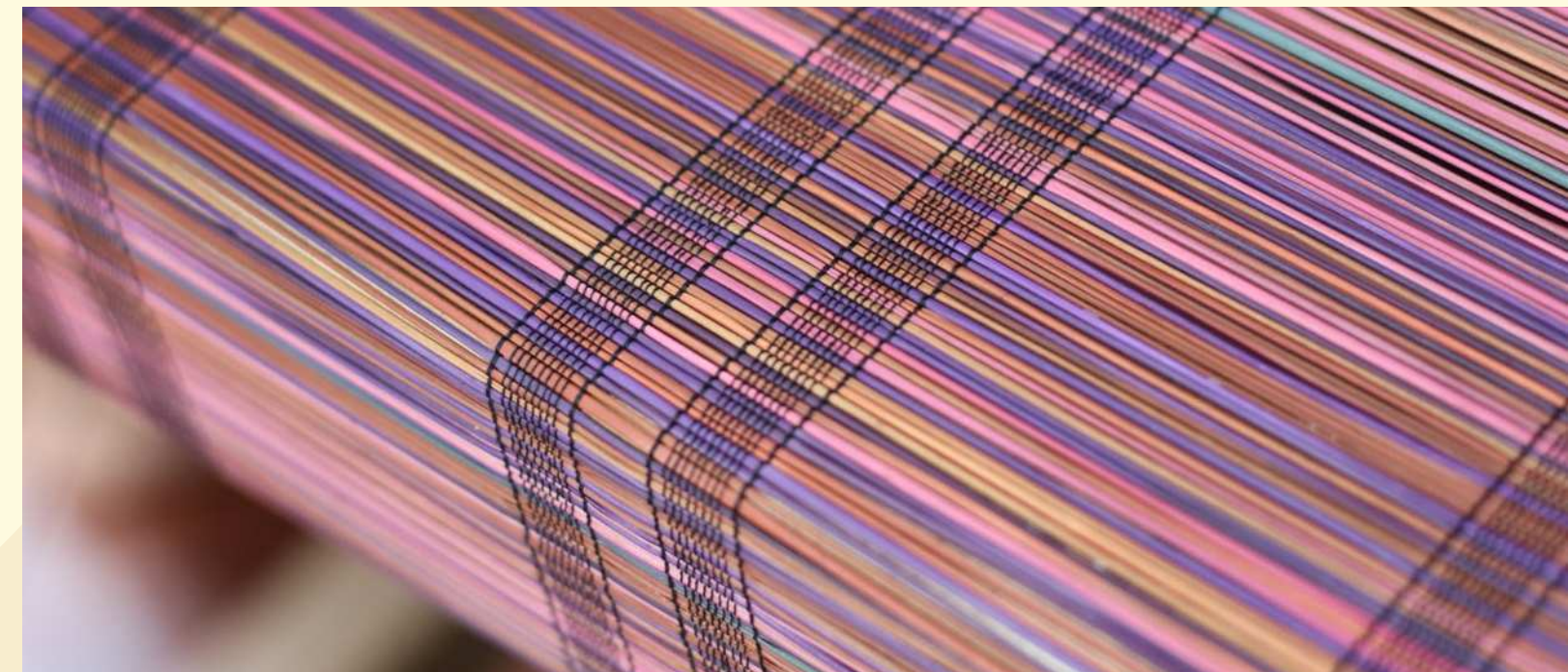
CITY TOUR

ETD: AM Tour - 8:00 AM | PM Tour - 1:00 PM

Duration: 4 Hours

What to Expect/Bring:

- Extra Water
- Camera
- Insect Repellent
- Sunblock
- Extra Money for Souvenirs & additional activities that is not included in the package



CITY TOUR

Itinerary:

- Crocodile Farm
- Mitra's Ranch
- Baker's Hill
- Binuatan Weaving Creation
- Immaculate Conception Cathedral
- Baywalk
- Plaza Cuartel
- Souvenir Shops

Inclusions:

- Entrance Fees
- Van Transfers
- Services of Tour Guide



Underground River

A must-see for first time visitors and tourist in Palawan. The Underground River is a 8.2-kilometer-long river that flows through a limestone cave system within a protected national park. It is considered one of the longest navigable underground rivers in the world, showcasing remarkable geological formations and diverse wildlife. It is a UNESCO World Heritage Site and one of the New 7 Wonders of Nature.



Underground River

ETD: 7:00 AM

Duration: 8 Hours

What to Expect/Bring:

- Extra Water
- Extra Shirt
- Insect Repellent
- Sunblock
- Waterproof bag for Valuables
- Camera
- Extra Money for Environmental Fee (Php 150) Souvenirs & additional activities that is not included in the package



Underground River

Itinerary:

- Sabang Wharf
- Sabang Beach
- Underground River

Inclusions:

- Entrance Fee
- Buffet Lunch
- VEP Fee and Audio Tour Fees
- Van and Boat Transfers
- Services of Tour Guide



Mangrove Tour

The Sabang mangrove paddle tour is a community-based tourism project by the local communities living in Sabang. As the boatman paddles the boat along the mangrove-fringed river, different kinds of mangroves can be observed.

According to the guide, the mangroves found in this part of Puerto Princesa Subterranean River National Park shows the pristine condition of a typical forest in Palawan. That is, before many migrants from various parts of the Philippines came over to enjoy the bounties of Palawan.

Mangrove tour is an optional side tour with minimal charge after Underground River Tour



Mangrove Tour

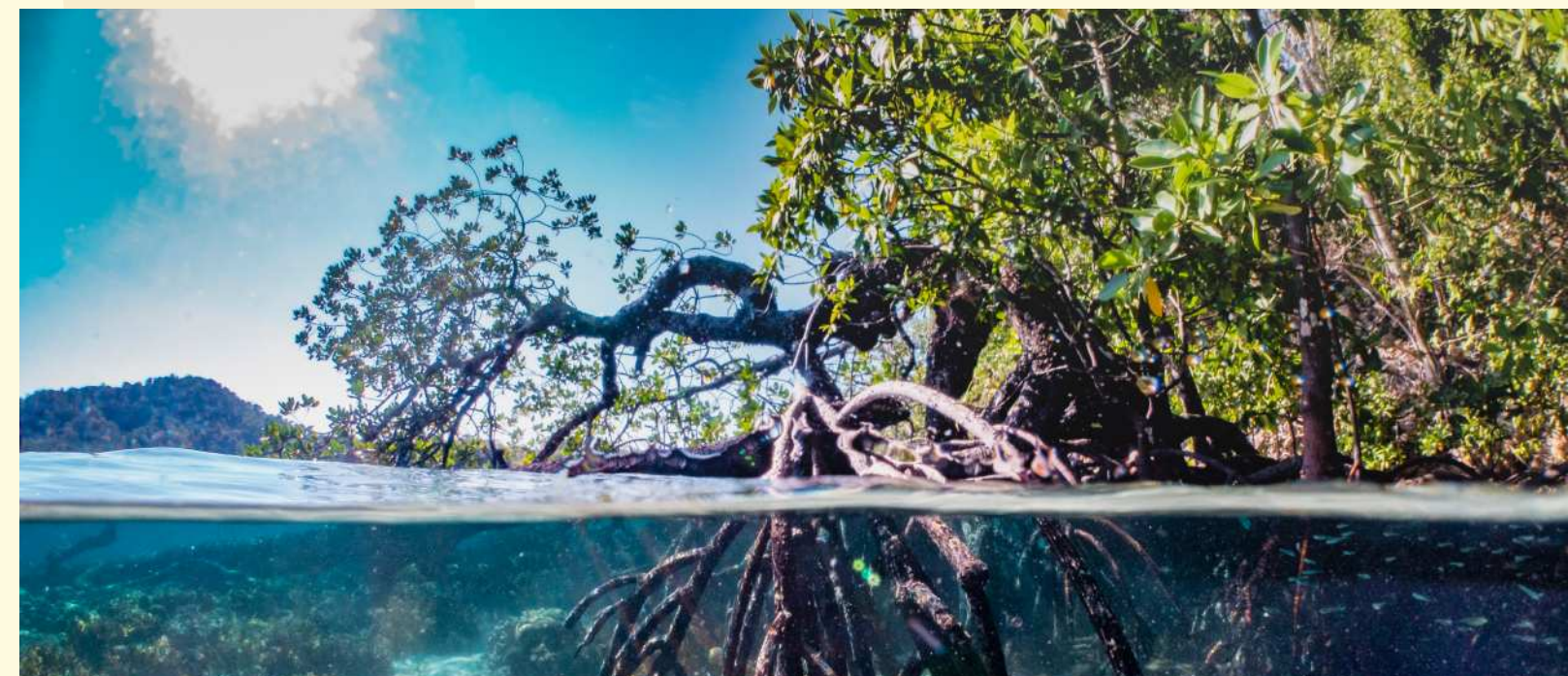
ETD: After Underground River Tour

What to Expect/Bring:

- Extra Water
- Extra Shirt
- Insect Repellent
- Sunblock
- Extra Money

Itinerary:

- Sabang Mangrove



Honda Bay Island Hopping

Starfish Island has the greatest population of Starfish Sea Star in all of Palawan as evident in its rare Symmetric Five-armed orange Starfish are the most abundant type in the area but you may be lucky to spot other varieties.

Luli Island is actually a short term for "Lulubog - Lilitaw", Which means Sink & Rise, which is what the Island does; At high tide the island disappears and at low tide, it reappears.

Cowrie Island is named after the small-to-large sea snail, marine gastropod mollusc called "cowrie." The island has several cabanas, a pavilion and thatched-roof spa huts, all overlooking the sea and creating a beautiful, picturesque scene.



Honda Bay Island Hopping

ETD: 7:00 AM

Duration: 8 Hours

What to Expect/Bring:

- Extra Water
- Extra Clothes
- Swimwear
- Snorkelling Gear
- Insect Repellent
- Sunblock
- Camera
- Plastic Bag/Case for Valuables
- Extra Money for Environmental Fee (Php 150) Souvenirs & additional activities that is not included in the package



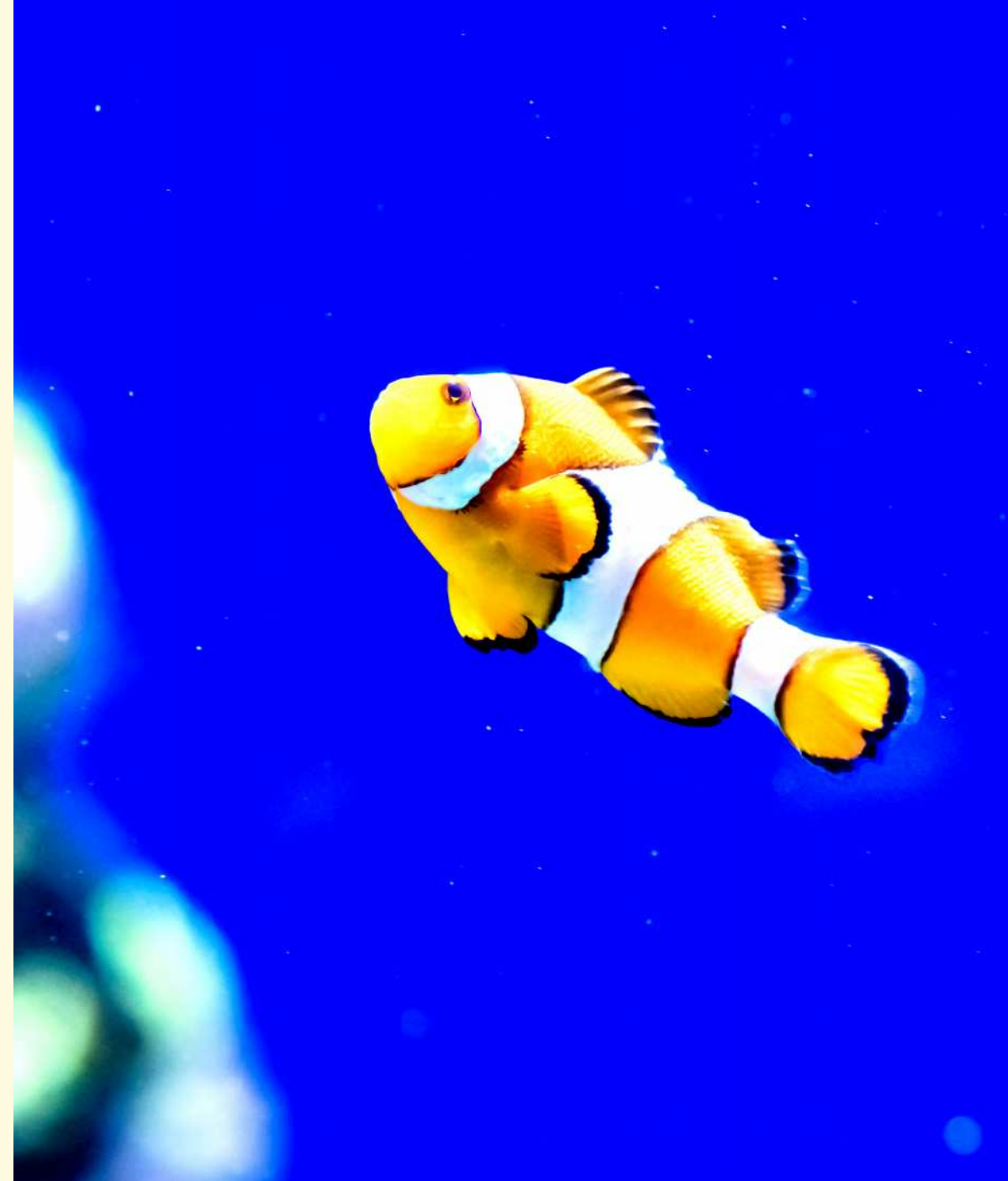
Honda Bay Island Hopping

Itinerary:

- Starfish Island
- Luli Island
- Cowrie Island

Inclusions:

- Entrance Fee
- Picnic Lunch
- Bath Towel
- Van and Boat Transfers
- Services of Tour Guide



Firefly Watching

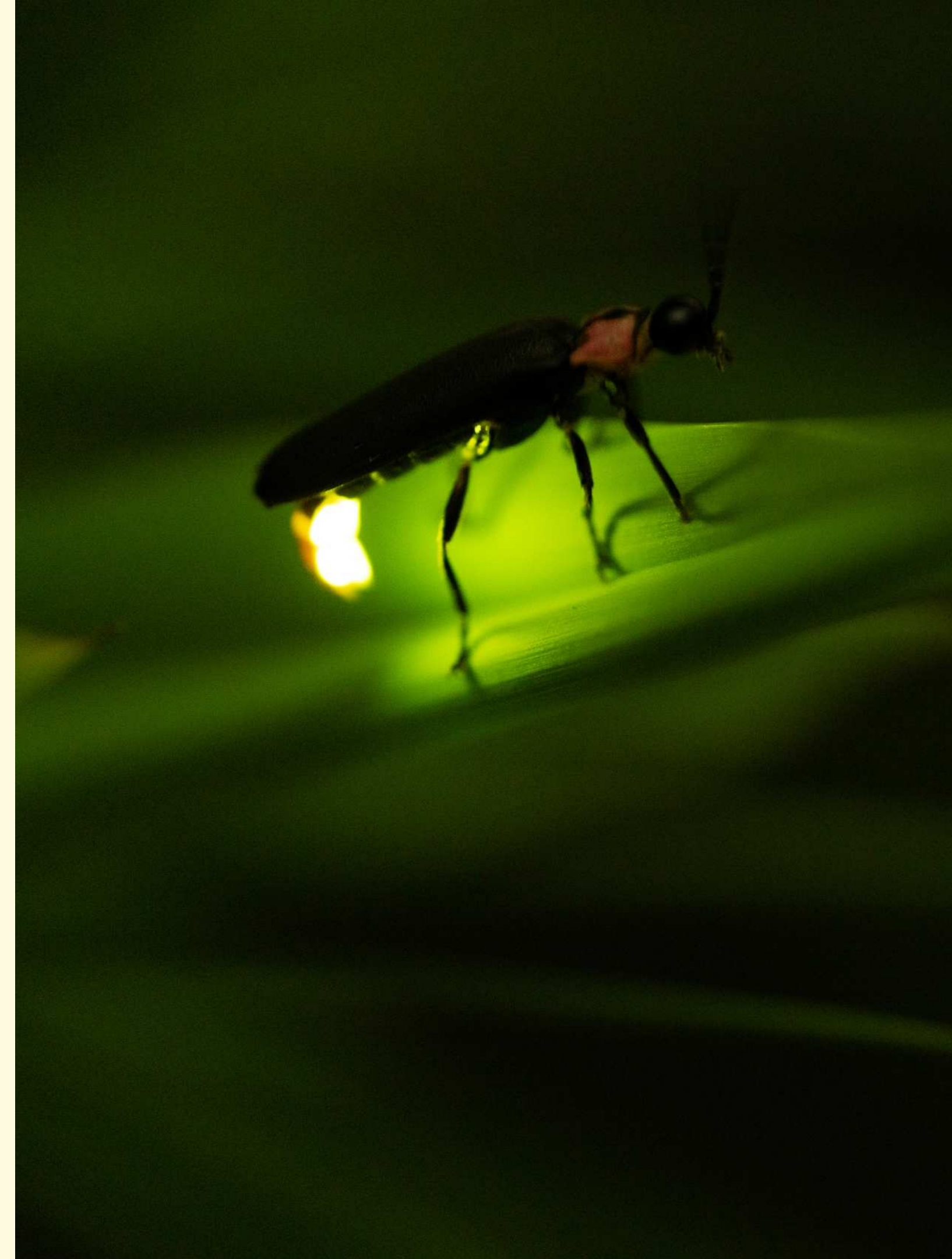
Firefly watching is a must see night activity that allows visitors to witness the enchanting sight of fireflies lighting up the mangrove trees.

ETD: 6:00 PM

Duration: 3-4 Hours

What to Expect/Bring:

- Extra Water
- Bag/Case for Valuables Camera
- Insect Repellant



Firefly Watching

Itinerary:

- The Firefly Watching with Mangrove River Cruise

Inclusions:

- Entrance Fees
- Dinner
- Van and Boat Transfer
- Service of Tour Guide

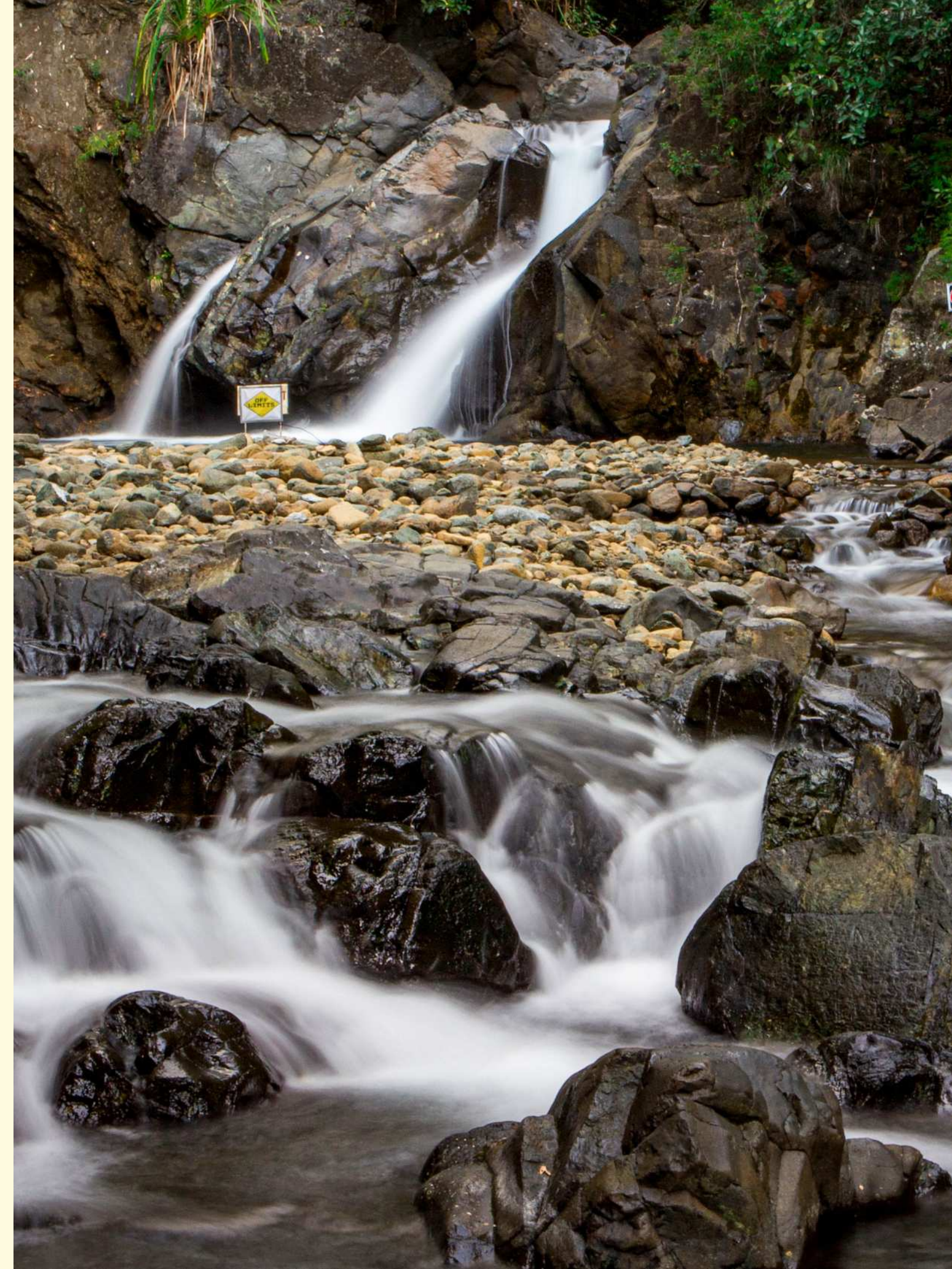


Estrella Falls

Estrella Falls is located in the Municipality of Narra which is 91 kilometers south of Puerto Princesa City and 6 km. away from the highway of Malatgao in Narra.

It is a twin perennial waterfall found within a virgin forest. Rare species of flora and fauna such as orchids and ferns surround the falls enhancing the charm and beauty of the place.

*Minimum of 7 Pax



Estrella Falls

ETD: 7:00 AM

Duration: 8 Hours

What to Expect/Bring:

- Extra Water
- Extra Clothes
- Insect Repellent
- Sunblock
- Towel
- Camera
- Plastic Bag/Case for Valuables



Estrella Falls

Itinerary:

- The Municipality of Narra, Palawan

Inclusions:

- Entrance Fee and Permit



Scuba Diving

If your passion is exploring the mysterious seas, try Scuba Diving. Located at the Puerto Princesa Bay Area which is 1 hour 45 minutes away from the resort.



Dolphin Watching

(Seasonal)

Excite your senses with the friendliest creatures of the deep blue and observe these intelligent and playful marine mammals in their natural habitat.

Hop on a boat and venture out into the waters of Palawan, where you'll have the opportunity to witness dolphins swimming, leaping, and interacting in groups known as pods. The sight of these graceful creatures in the crystal-clear waters of Palawan is sure to leave you with unforgettable memories.



Dolphin Watching

(Seasonal)

What to Expect/Bring:

- Extra Water
- Extra Clothes
- Insect Repellent
- Sunblock
- Camera
- Plastic Bag/Case for Valuables
- Extra Money for additional activities



Whale Shark Swimming

(Seasonal)

Get up close with the world's largest fish or locally known as "*dugong*". Join a one of a lifetime experience, where you can witness these gentle giants up close. Swim alongside these magnificent creatures as they gracefully glide through the water, showcasing their impressive size and distinct patterns, creating an unforgettable and humbling encounter.



Whale Shark Swimming (Seasonal)

What to Expect/Bring:

- Extra Water
- Extra Clothes
- Swimwear
- Snorkelling Gear
- Insect Repellent
- Sunblock
- Camera
- Plastic Bag/Case for Valuables
- Extra Money for additional activities





PRINCESA GARDEN ISLAND
RESORT AND SPA

Explore the untouched beauty
of Palawan. Plan with us and
we'll take care of the rest!

(+63) 917 873 9574 | (+63) 918 967 5132
www.princesagardenisland.com